

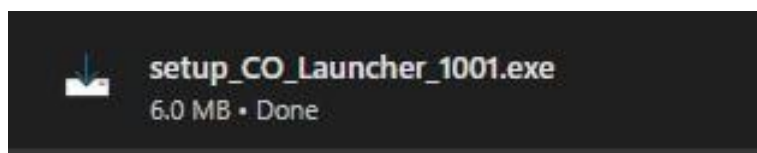
# ClinicOffice<sup>v6</sup>

## Demo Setup Guide

[1] Download the ClinicOffice Launcher from this page:

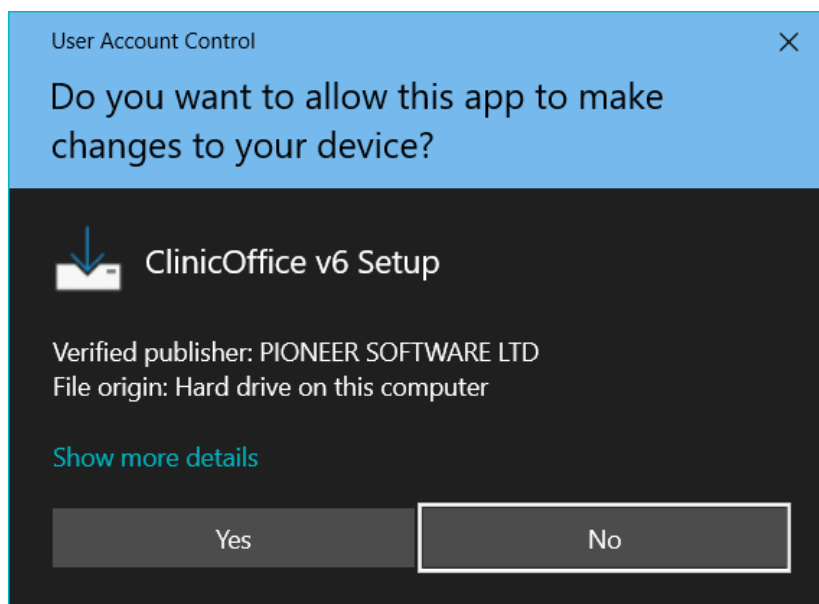
<https://pioneersoftware.co.uk/co-demo>

[2] The download will start and depending on which web browser you use; you may see something like this at the top right of the window...

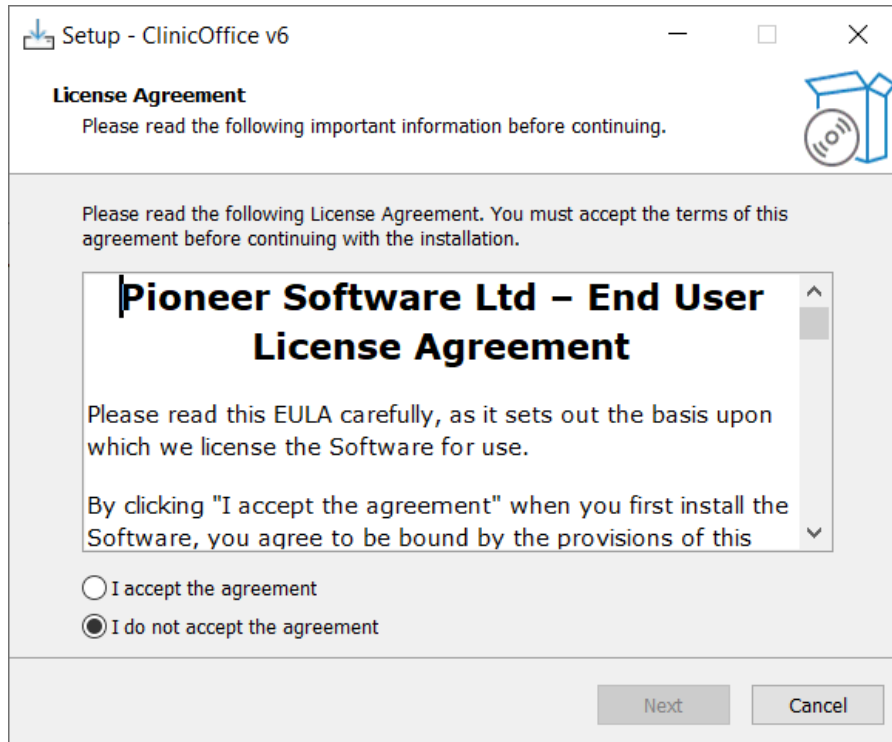


Once the download has completed launch the “**setup\_CO\_Launcher\_10xx.exe**” file to start the installation process.

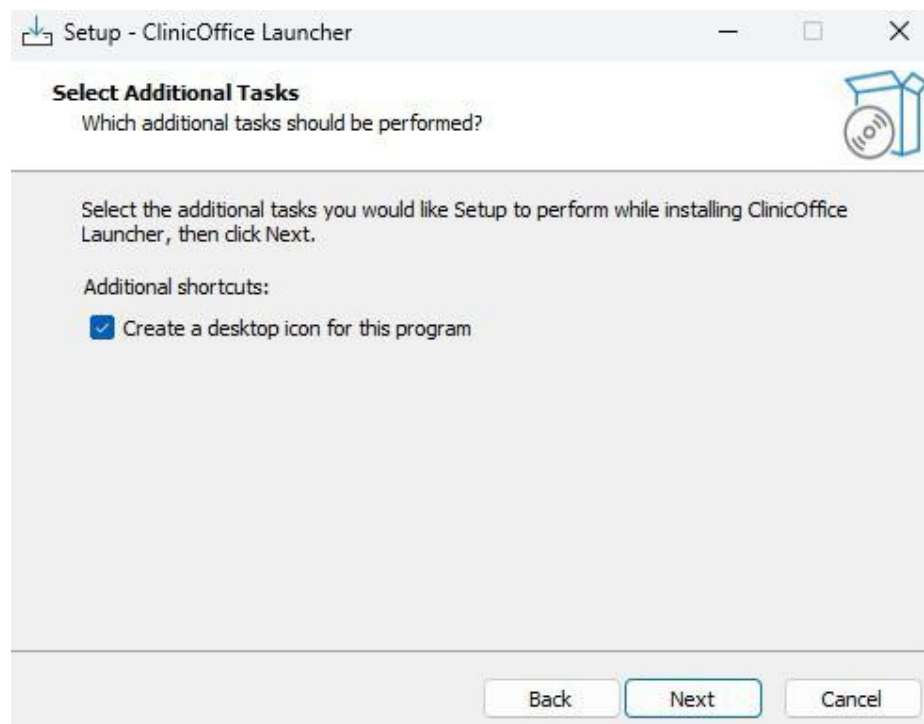
[3] Depending on your Windows configuration, you may see a *SECURITY MESSAGE* like the following. Simply click **YES** to allow the setup to continue...



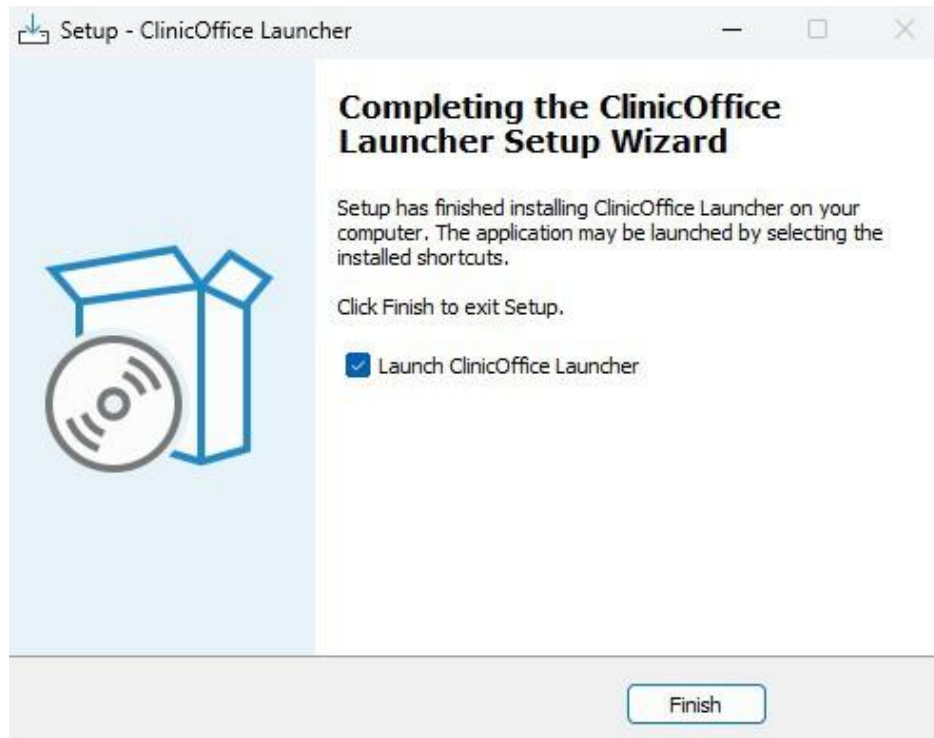
**[4]** If you're happy to accept our End User License Agreement (EULA), click **NEXT** to proceed...



**[5]** We recommend checking the box to create a desktop icon for this program so that you can easily run the Launcher again in future. Click **NEXT** to proceed..., and then **INSTALL**.



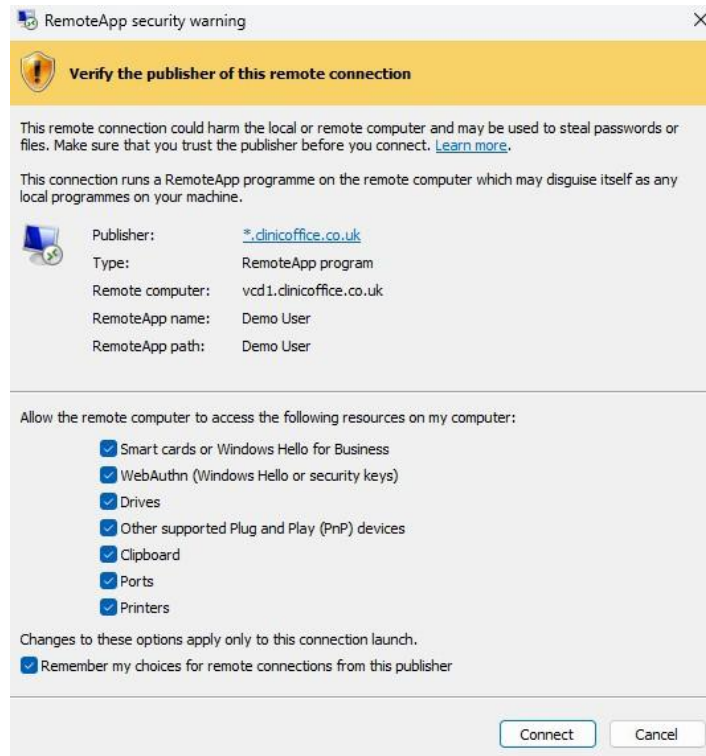
[6] Once installed, leave the box to 'Launch ClinicOffice Launcher' checked, and click **Finish** to proceed...



[7] In the window that appears, enter the information shown on the image below, and then check the 'Auto-launch in future' box. Then click **Launch ClinicOffice**.



**[8]** If the following security message appears, check **ALL** available boxes and click **Connect**.



**[9]** If you are prompted for a password, please enter: **clinicoffice-demo**

Then check the '**Remember Me**' box and click OK.



[10] Once you reach the login screen, enter the following credentials:-

Username: **Demo User**

Password: **clinicoffice-demo**

And that's it! You're free to use the demo for as long as you need!

